

General Information:

15.5" under beds

Window: 38.5" wide x 51" tall

Desk space: 42" wide x 24" deep

Dressers have (5) drawers, each: 5.5" tall x 26" wide x 15" deep

Storage: (1) 13" tall x 47" wide x 24" deep

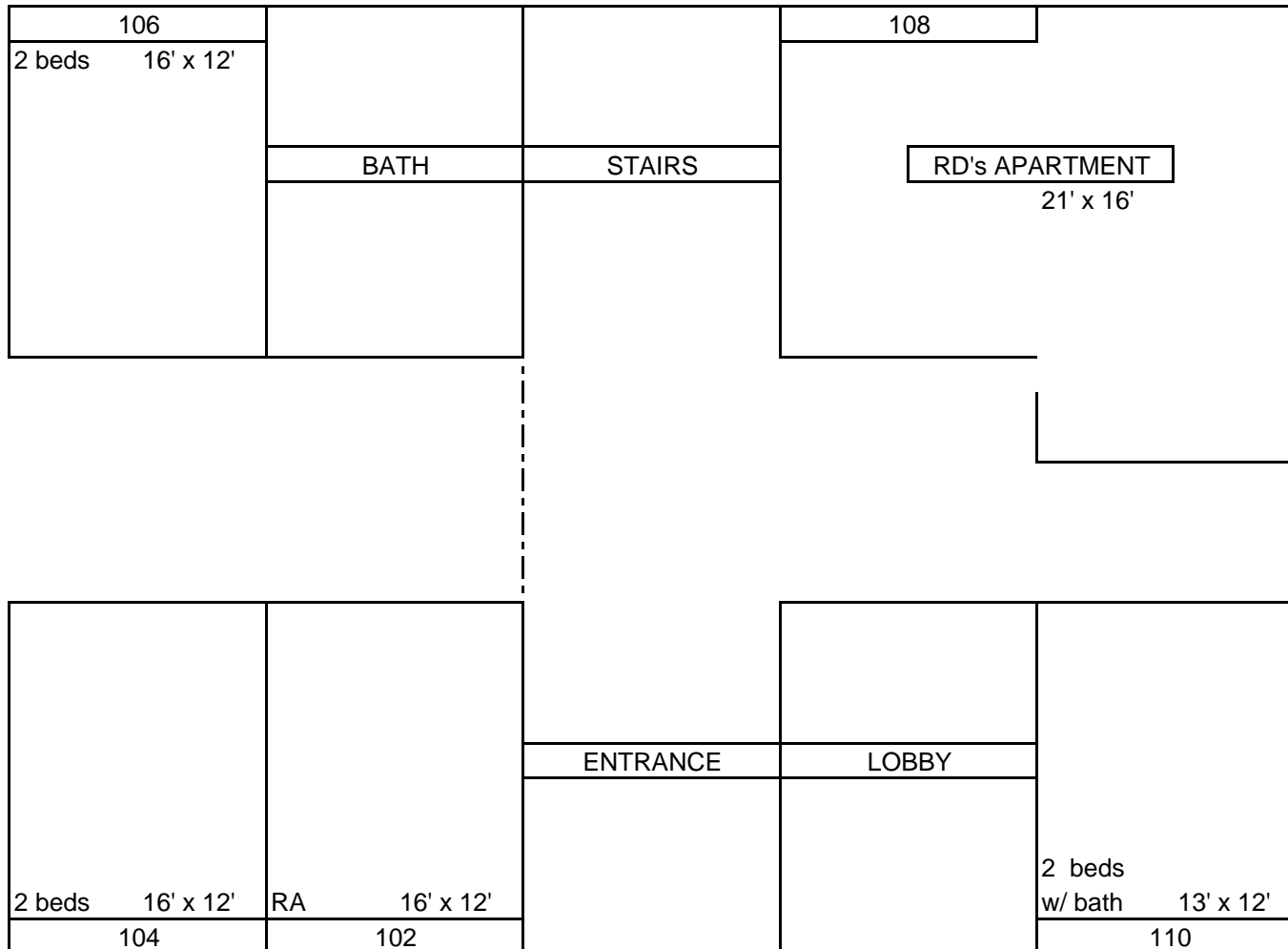
(1) 11.5" tall x 47" wide x 19.5" deep

Desks have (4) drawers: (1) 3" tall x 22.5" wide x 17.5" deep

(2) 3.5" tall x 12.5" wide x 17" deep, (1) 10" tall x 12.5" wide x 17" deep

Closet: 33" deep x 46" wide x 81" tall

CALDWELL HALL 1st Floor



CALDWELL HALL

2nd Floor

| | | | | | | | |
|--------|-----------|--------|-----------|--------|-----------|--------|-----------|
| 216 | | | | 202 | | 204 | |
| 2 beds | 16' x 12' | | | 2 beds | 16' x 12' | 2 beds | 16' x 12' |
| | | BATH | STAIRS | | | | |
| | | | | | | | |
| | | | | | | | |
| 2 beds | 16' x 12' | 2 beds | 16' x 12' | RA | 16' x 12' | 2 beds | 16' x 12' |
| 214 | 212 | 210 | 208 | 206 | | | |

CALDWELL HALL

3rd Floor

| | | | | |
|------------------|------------------|--------------|------------------|------------------|
| 316 | | | 302 | 304 |
| 2 beds 16' x 12' | | | 2 beds 16' x 12' | 2 beds 16' x 12' |
| | BATH | STAIRS | | |
| | | | | |
| 2 beds 16' x 12' | 2 beds 16' x 12' | RA 16' x 12' | 2 beds 16' x 12' | 2 beds 16' x 12' |
| 314 | 312 | 310 | 308 | 306 |